

Sample 336-071221-007

D8/D10 Chew Sour Cherry

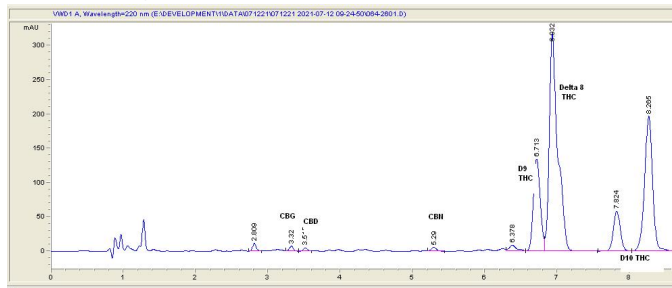
Sample Submitted: 07-12-2021; Report Date: 07-12-2021

Null Sample Unit Size: 4.20 g

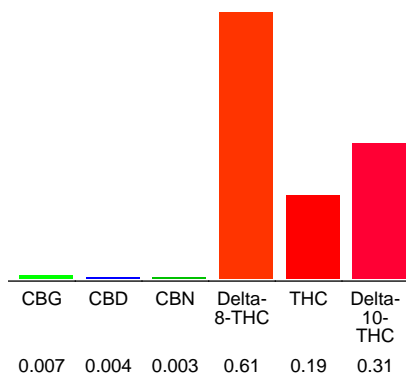
## D8/D10 Chew Sour Cherry

Edible: Candy

### Chromatogram



### Cannabinoid Profile



### Cannabinoid Profile by HPLC

**0.19%**  
Calculated THC Yield

**0.00%**  
Calculated CBD Yield

**1.12%**  
Total Cannabinoids

| Cannabinoid                 | % wt        | mg/unit     |
|-----------------------------|-------------|-------------|
| CBG                         | 0.007       | 0.294       |
| CBD                         | 0.004       | 0.168       |
| CBN                         | 0.003       | 0.126       |
| Delta-8-THC                 | 0.61        | 25.62       |
| THC                         | 0.19        | 7.98        |
| Delta-10-THC                | 0.31        | 13.02       |
| <b>Total Cannabinoids</b>   | <b>1.12</b> | <b>47.2</b> |
| <b>Calculated THC Yield</b> | <b>0.19</b> | <b>7.98</b> |
| <b>Calculated CBD Yield</b> | <b>0.00</b> | <b>0.17</b> |

Calculated Maximum THC Yield = THC + 0.877 \* THCA  
Calculated Maximum CBD Yield = CBD + 0.877 \* CBDA

**Marin Analytics, LLC**

250 Bel Marin Keys Blvd, Suite D4  
Novato, CA 94949

415-936-6477 / sarabiancalana1@gmail.com

**Sara Biancalana**  
Chief Scientist

This sample has been tested by Marin Analytics, LLC using valid testing methodologies and a quality system. Values reported relate only to the sample tested. Marin Analytics, LLC makes no claims as to the efficacy, safety or other risks associated with any detected or non-detected levels of any compounds reported herein. This Certificate shall not be reproduced except in full, without the written approval of Marin Analytics, LLC.